

IBI Purification Kits - Comparison Data

Comparison of Plasmid DNA Extraction Kits - IBI and Brand Q

Conclusions:

- 1.) **IBI** brand Purification Kits are equivalent or superior to Brand Q in **YIELD**
- 2.) **IBI** brand Purification Kits are equivalent to Brand Q in **PURITY**

Purity & Stability Test Each Sample Tested 3X

IBI Brand	DH5a/TA			BL21/pET20b		
Final Elution Vol. (ml)	43.00	44.00	44.00	44.50	44.50	43.50
DNA Conc. (ng/ml)	139.40	115.80	123.50	19.70	18.70	18.00
Total DNA (mg)	5.99	5.01	5.43	0.88	0.83	0.78
A260/A280	1.92	1.91	1.91	1.78	2.03	1.82
Brand Q	DH5a/TA			BL21/pET20b		
Final Elution Vol. (ml)	44.50	44.50	45.00	46.00	44.00	45.00
DNA Conc. (ng/ml)	112.20	100.80	105.70	20.60	24.80	19.90
Total DNA (mg)	4.99	4.49	4.76	0.95	1.09	0.90
A260/A280	1.91	1.90	1.89	1.72	1.72	1.84

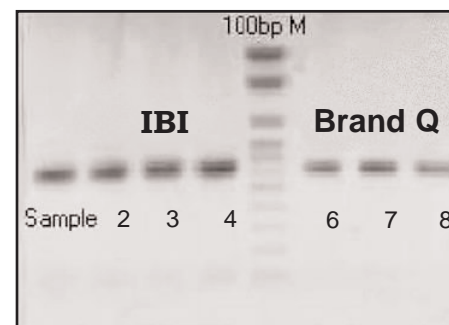


Photo 1: Comparison of % Recovery
 Lane 1: Sample
 Lane 2-4: **IBI** Brand
 Lane 6-8: Brand Q

Comparison of Gel/PCR Extraction Kits - IBI and Brand Q

Conclusions:

- 1.) **IBI** brand Purification Kits are equivalent or superior to Brand Q in **YIELD**
- 2.) **IBI** brand Purification Kits are equivalent to Brand Q in **PURITY**

Purity & Stability Test Each Sample Tested 3X

IBI Brand	PCR Clean-Up			Gel Extraction		
Volume (ml)	35.50	36.50	35.00	43.00	44.50	41.00
DNA Conc. (ng/λ)	69.80	66.60	71.30	25.20	24.50	36.20
Total DNA (μg)	2.48	2.43	2.50	1.08	1.10	1.48
A260/A280	1.85	1.97	1.86	1.80	1.70	1.88
Brand Q	PCR Clean-Up			Gel Extraction		
Volume (ml)	37.00	37.00	37.00	46.00	46.00	46.00
DNA Conc. (ng/λ)	48.80	62.20	50.40	13.90	17.60	18.20
Total DNA (μg)	1.81	2.30	1.86	0.64	0.81	0.84
A260/A280	1.63	1.63	1.66	1.74	1.79	1.83

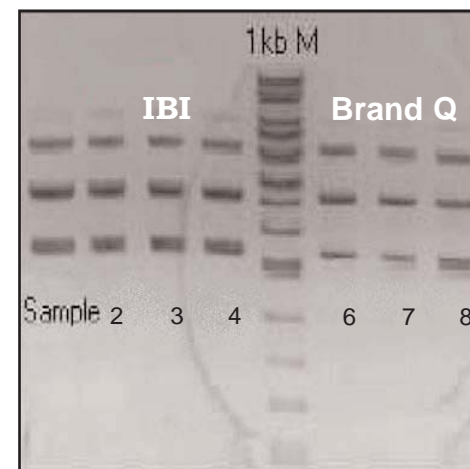


Photo 2: Comparison of % Recovery
 Lane 1: Sample
 Lane 2-4: **IBI** Brand
 Lane 6-8: Brand Q